

DE

Technische Unterlagen

Ökodesignverordnung

EN

Technical Documents

Ecodesign Regulation



GE 235 TC Elektrodenschweisgerät

#20005



1

DE

Materialliste

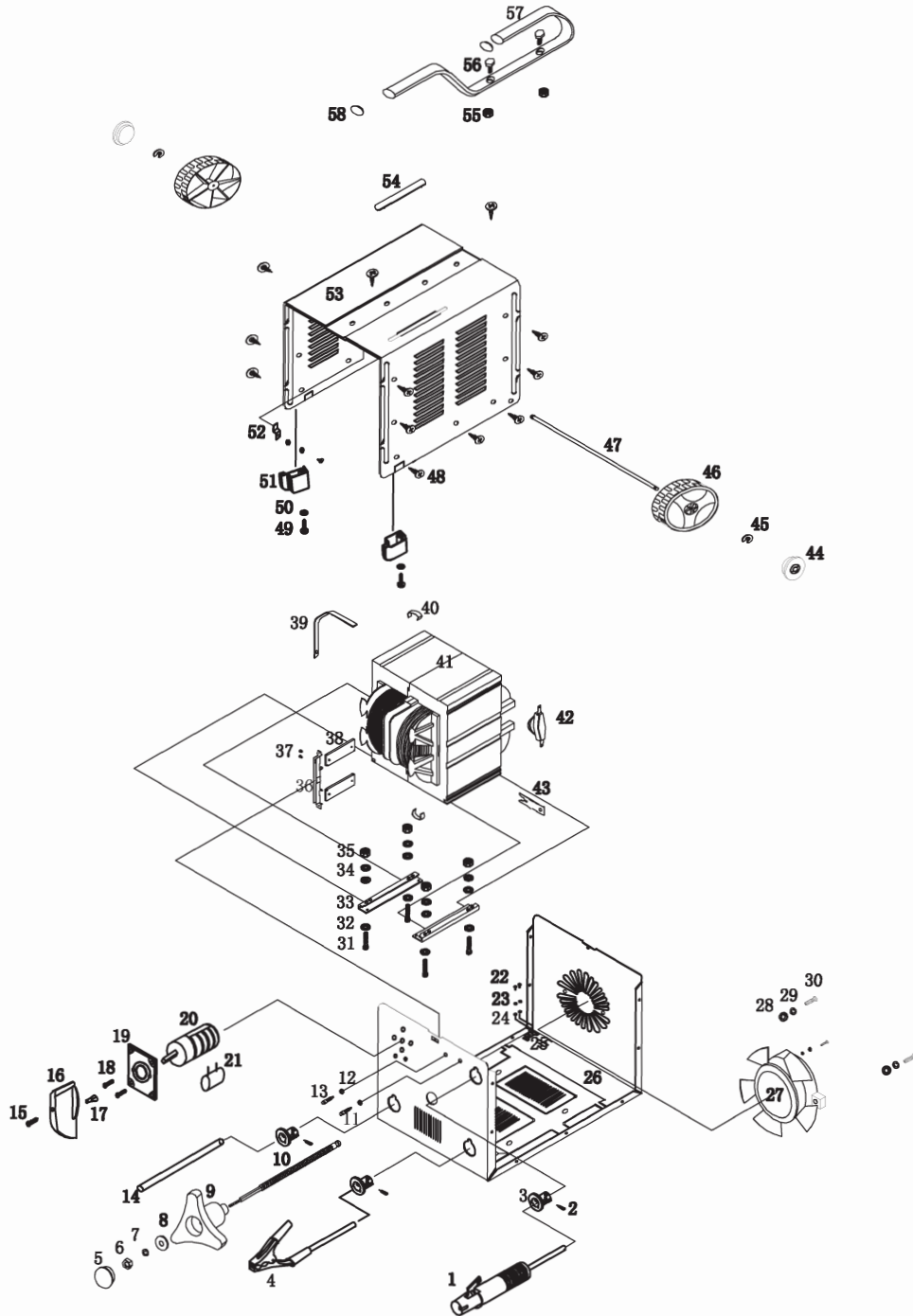
EN

Bill of materials

Güde®

GE 235 TC #20005

Bitte beachten Sie, dass die Zeichnung und Stückliste nicht für die Ersatzteilbestimmung angedacht sind.



Elektrodenschweisgerät GE 235 TC

NO.	Name	Specification	qty	weight (g)
1	electrode holder	KDH-2000 200A 20%	1	153
2	screw	M3X12mm round head cross	3	3
3	anti-haul		3	19.7
4	earth clamp	KDC-1200 50-200A	1	80
5	cover of Current regulating handle	/	1	1.5
6	nut	M5mm	1	1
7	flat washer	Φ5mm	1	0.1
8	flat washer	Φ5mm	1	0.1
9	Current regulating handle		1	31
10	rod	165mm	1	56
11	yellow indicator	AD-16Y-2 M10 AC 400V	1	7
12	white indicator	AD-16W-2 M10 AC 400V	1	7
13	crew		2	2
14	power cable	H07RN-F 4G2.5 mm ²	1	470
15	screw	M3*7mm round head cross	1	2
16	knob		1	5.6
17	switch knob fixed board		1	2
18	screw	M3.8*16mm round head cross	2	2
19	switch fixed board		1	9.6
20	switch		1	140
21	capacitor	CBB22 630V-1.4uF±20%	1	5
22	earth screw	M4*6 round head cross	5	5
23	spring washer	Φ 4mm	5	0.5
24		Φ 4mm	5	0.5
25			1	1
26	mother board		1	1480
27	fan	KDF-W150 230V 0.22A	1	580
28	flat washer	Φ 5mm	2	0.2
29	spring washer	Φ 5mm	2	0.2
30	fan fixed screw	M4*16 round head cross	2	2
31	transformer fixed screw	M5*20mm hexagonal screw	4	4
32		Φ 5mm	8	0.8
33	U-type bracket		2	137
34	flat washer	Φ 5mm	4	0.4
35		M5	4	
36	bracket of moving core		1	53
37	crew	M3*6mm (flat head)	2	2
38	moving core	110*43*10 mm	2	660
39			1	
40	snap spring	/	1	4
41	transformer		1	14450
42	thermal cut-out	128°C32A 400V	1	17
43	clip	/	1	7
44	cover of wheel		1	96
45	lock of axle		2	2
46	wheel	WHEEL-250 (PP)	2	172
47	axle	Φ 8X315mm	1	126
48	crew	M4*10mm round head cross	16	8
49	crew	M3*16mm round head cross	2	2
50	flat washer	Φ 4mm	2	2
51	foot		2	20



®
Elektrodenschweissgerät GE 235 TC
20005

NO.	Name	Specification	qty	weight (g)
52	earth piece		2	
53	housing		1	1990
54	Current perspective window		1	5
55	nut	M8	2	4
56	screw	M8*20mm (hexagonal screw)	2	8
57	handle		1	470
58	block of handle		2	8

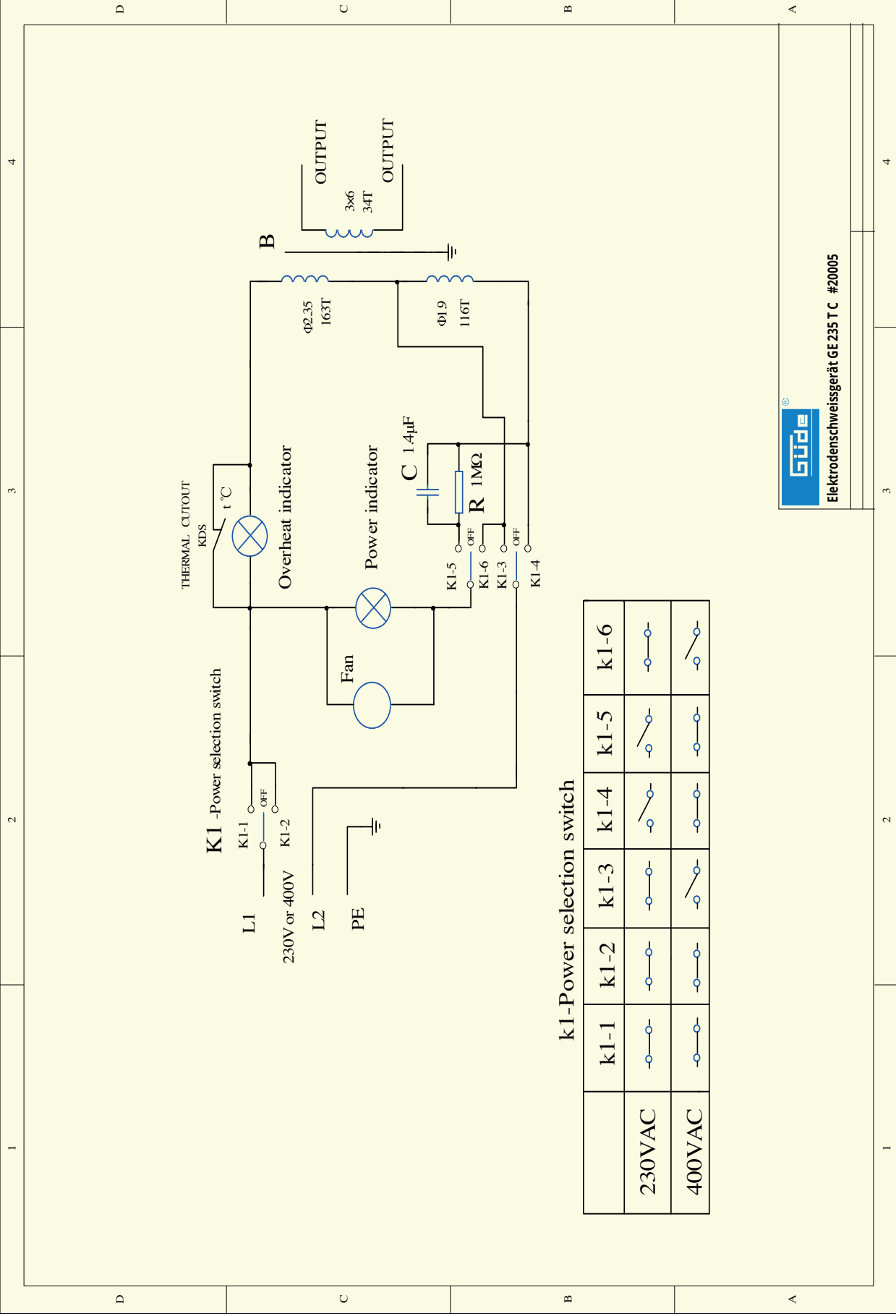
2

DE

Schaltplan

EN

Circuit diagram



k1-Power selection switch

	k1-1	k1-2	k1-3	k1-4	k1-5	k1-6
230VAC						
400VAC						



Elektroschweißgerät GE 235 T C #20005

GÜDE GmbH & Co. KG
Birkichstrasse 6
74549 Wolpertshausen
Deutschland
Tel.: +49-(0)7904/700-0
Fax.: +49-(0)7904/700-250
eMail: info@guede.com

